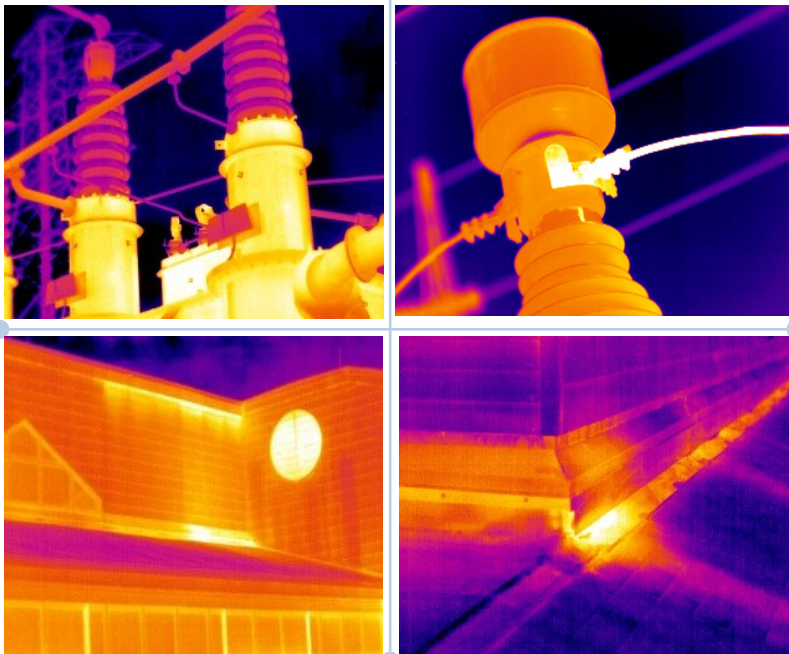




## SATIR Hotfind S

### *384X288 Resolution High Performance IR Camera*

The Hotfind-S is a high performance camera that can be used in universal industrial applications. It uses new imaging processing technology to reduce interference combined with the outstanding performance of the latest generation 384X288 detector, the Hotfind-S produces Sharper Thermal images. The high speed processing engine with up to 50Hz dynamic real-time graphical output, produces a smooth, no delay image



## Features

- New Platform Upgrade, intelligent and integrated design
- Innovative Hardware with built-in Memory
- Dual Control—Keypad & Touch
- Superior Image—Comparable to High-End Cameras

Marley's Business Park, Marley's Lane, Drogheda, Co. Louth, Ireland

**Tel:** + 353 (42) 9846786

**Email:** [enquiry@satir.com](mailto:enquiry@satir.com)

**Website:** [www.satir.com](http://www.satir.com)

Camera Name	Hotfind S
Resolution	384X288
Thermal Sensitivity (N.E.T.D)	0.05°C@30°C
Detector Type	UFPA
Spectral Range	7.5-14 μm
Focus Mechanism	Manual
<b>Measurement</b>	
Temperature Range	-20°C + 600°C (Up to 1500°C, Optional)
Accuracy	±2°C + 2% of reading
Measurement Tools	9 movable spots, auto hot/cold spot, 1 line profile, 2 areas boxes, isotherm
Temperature Alarms	Yes detects abnormal temperatures
<b>Environmental</b>	
Operating	-20°C ~+ 50°C
Storage	-40°C ~ + 70°C
Encapsulation	IP54
<b>Physical Characteristics (Camera Body)</b>	
Weight	Less than 800g
<b>Interfaces</b>	
Video Output	NTSC (60Hz)/PAL (50Hz)
Keypad	Yes

Please be aware specifications can vary from time to time

Marley's Business Park, Marley's Lane, Drogheda, Co. Louth, Ireland

**Tel:** + 353 (41) 9846786

**Email:** enquiry@satir.com

**Website:** www.satir.com