



## CK280-M

### Compact Fever Screening System

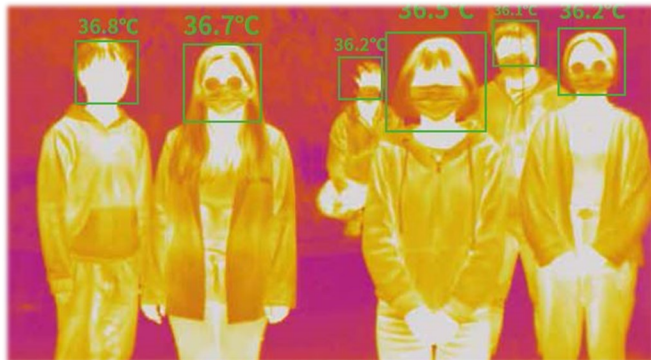
The CK280-M is a compact fever screening that is easy to setup, once mounted onto the tripod, it can connect to a monitor via the HDMI cable. It has a temperature accuracy of  $\pm 0.5^{\circ}\text{C}$  without the need for a black body. It has a temperature range of  $28^{\circ}\text{C} \sim 45^{\circ}\text{C}$  making it suitable to detect high fevers in humans. It has a detection distance of  $1 \sim 4\text{m}$  which means the CK280-M is ideal for use in reception areas such as in doctors clinics or offices.



The CK280-M has face mask detection and an audio temperature alarm to alert if a high temperature reading is detected. Both digital and thermal visuals can be displayed on the monitor allowing the technician to choose a imaging mode most suitable to the environment.

## Key Features

- 160x120/256x192 IR Detector
- Temperature Accuracy  $\pm 0.5^{\circ}\text{C}$
- Easy to setup
- Temperature Range  $28^{\circ}\text{C} \sim 45^{\circ}\text{C}$
- Detection Distance  $1 \sim 4\text{m}$
- Audio Temperature Alarm
- Face Mask Detection



# CK280-M Specifications

Thermal Camera	
Detector Type	Uncooled Vanadium Oxide (VOx) Detector
Detector Resolution Options	160x120,256x192
Thermal Sensitivity (NETD)	<50 mK (0.050°C)
Visible Camera	
Image Sensor	1/2.8" Sony CMOS
Effective Resolution	1902x 1080
Min. Illumination	Colour: 0.1Lux @(F1.2, AGC ON) B/W: 0.01Lux @(F1.2, AGC ON)
Image Function	White Balance, Digital Noise Reduction, Wide Dynamic
Lens	4mm
Temperature Measurement	
Temperature Range	28-45°C
Temperature Accuracy	±0.5°C (Body Temperature 33°C-40°C)
Measurement Distance	1-4m
Target Mode	Single Or Multiple
Smart Tracking	Intelligent Face Tracking, Mask Detection
Temperature Alarm	Yes
Ports	
HDMI	1
USB	1
TF Storage Card	1
Ethernet	1 RJ45 10M/100M Adaptive Ethernet Port
Speaker	Built-in, Voice Alarm
Power	1
General Specifications	
SDK Development	Support Linux and Windows SDK development
Working Environment	Temp. 10~50, RH 85% max.
Powered By	DC 12V
Shell	Metal
Size	126x90x50mm

Please be aware specifications can vary from time to time

Marley's Lane, Drogheda, Co. Louth, Ireland

Tel: + 353 (41) 9846786  
Website: www.satir.com

Email: enquiry@satir.com