

# **SATIR IR Tools**

## **Operation Manual**

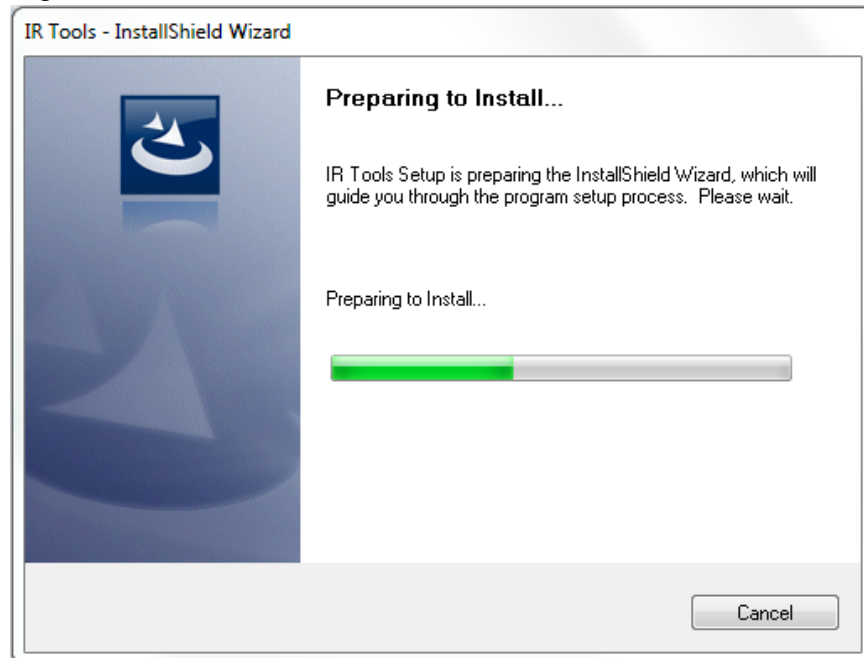
# Content

1. Software Installation .....	3
2. IR Video Player Introduction .....	5
3. IR Video Player Operating Instruction .....	7
3.1 Open Video .....	7
3.2 Video playing .....	8
3.3 Add analysis .....	9
3.4 Change analysis .....	13
3.5 Delete analysis .....	14
3.6 Set Palette.....	15
3.7 Adjust Level &Span and playing mode .....	16
3.8 Image Enhance.....	17
3.9 Trace Mode .....	18
3.10 Image capture.....	18
3.11 Video Editing .....	19
3.12 Generate report.....	20
3.13 About and help.....	21
4. IR Viewer Introduction .....	22
5. IR Viewer Operating Instruction.....	24
5.1 Open image .....	24
5.2 Add Analysis .....	25
5.3 Change analysis .....	29
5.4 Delete analysis .....	30
5.5 Set Palette.....	31
5.6 Adjust Level& Span.....	32
5.7 Parameter Setting.....	33
5.8 Isotherm analysis .....	37
5.9 Save image, play sound and trending .....	39
5.10 Generate report.....	40
6. Declaration .....	41

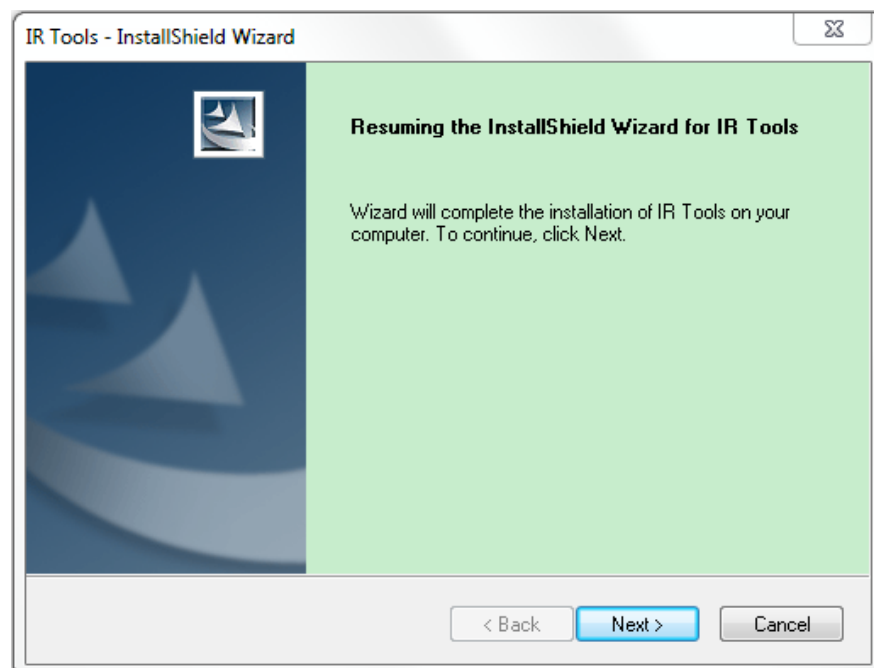
# 1. Software Installation

1.1 Double click on “IR Tools.exe”  IR Tools.exe ;

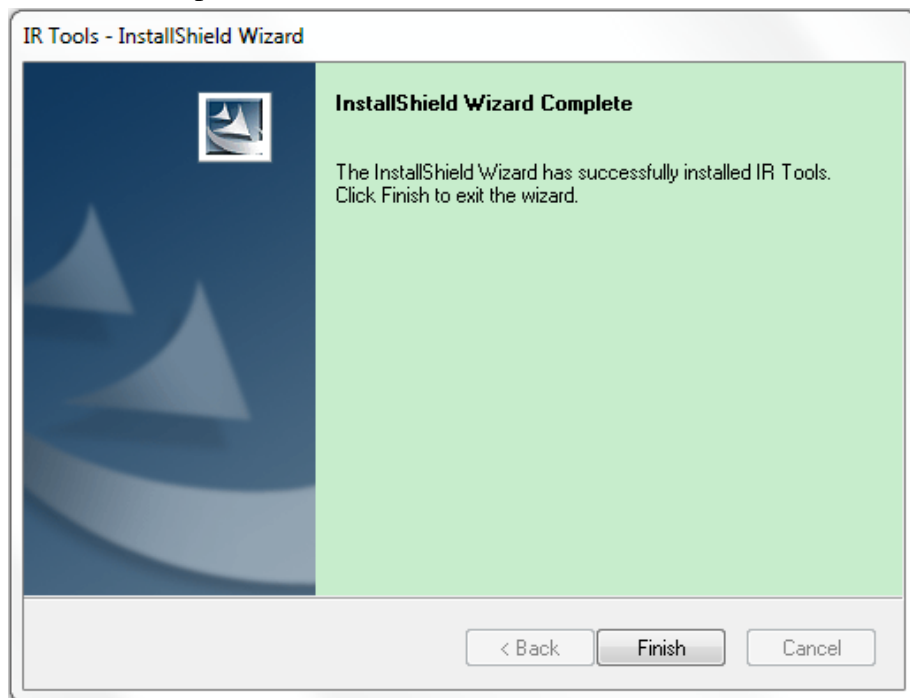
1.2 Extracting IR Tools for installation;



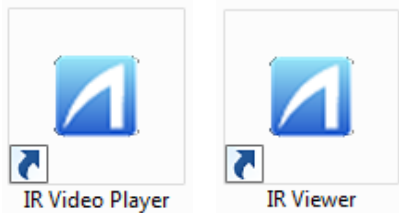
1.3 Click “Next” to continue the installation;



1.4 Click Finish to complete and close installation.



1.5 After installation, shortcut of IR viewer and IR Video Player will automatically generate on Desktop.

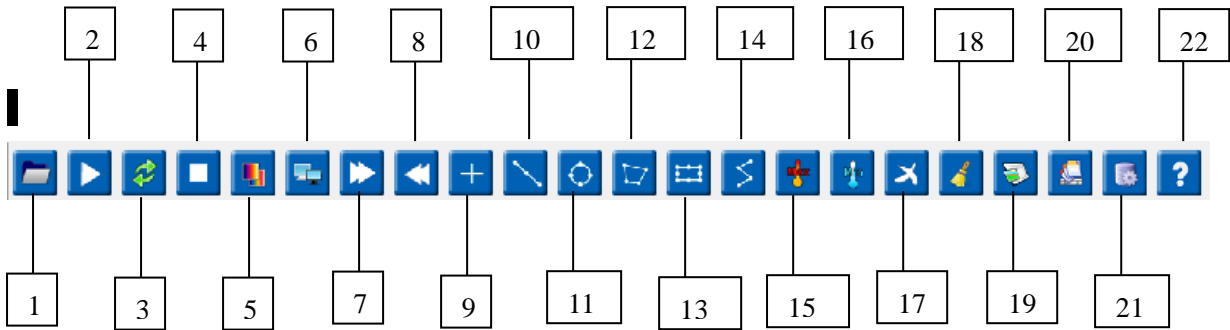


## 2. IR Video Player Introduction

2.1 Double click on IR Video Player to open IR Video Player;



2.2 .Manu introduction;

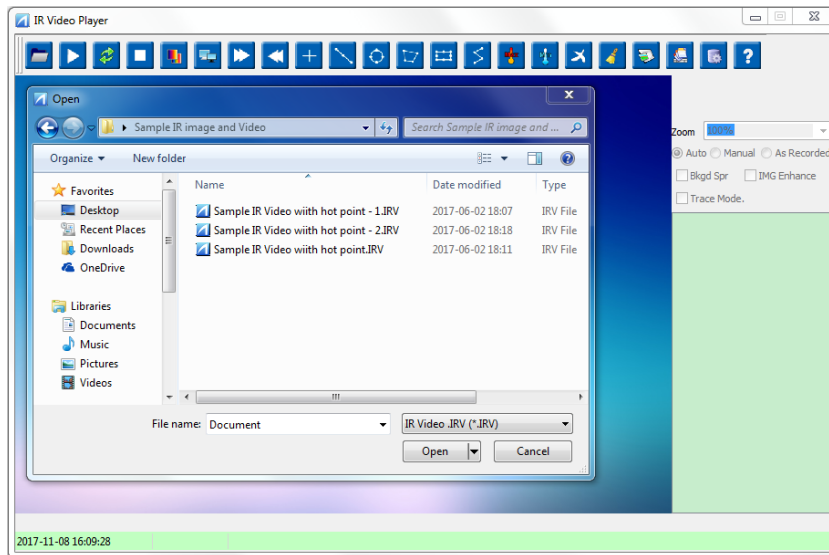


<b>1</b>	Open file	<b>12</b>	Add polygon
<b>2</b>	Play/Pause	<b>13</b>	Add rectangle
<b>3</b>	Loop playback	<b>14</b>	Add polyline
<b>4</b>	Stop	<b>15</b>	Max temp
<b>5</b>	Change Palette	<b>16</b>	Min temp
<b>6</b>	Video operation	<b>17</b>	Delete analysis
<b>7</b>	Accelerate	<b>18</b>	Delete all analysis
<b>8</b>	Decelerate	<b>19</b>	Snap image
<b>9</b>	Add point	<b>20</b>	Report generation
<b>10</b>	Add line	<b>21</b>	Parameter setting
<b>11</b>	Add circle	<b>22</b>	Help/Language

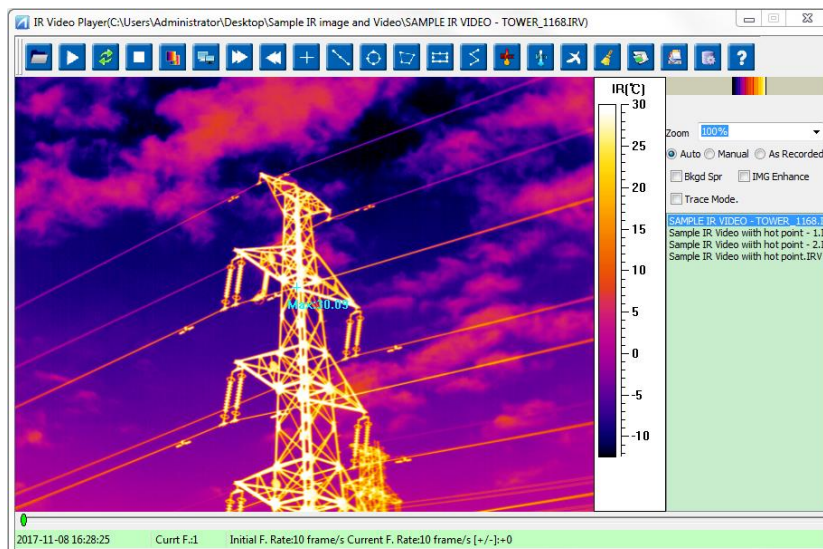
# 3. IR Video Player Operating Instruction

## 3.1 Open Video







3.1.1 Click icon “open” to choose thermal file;



3.1.2 After choosing video, software is as follows:



## 3.2 Video playing

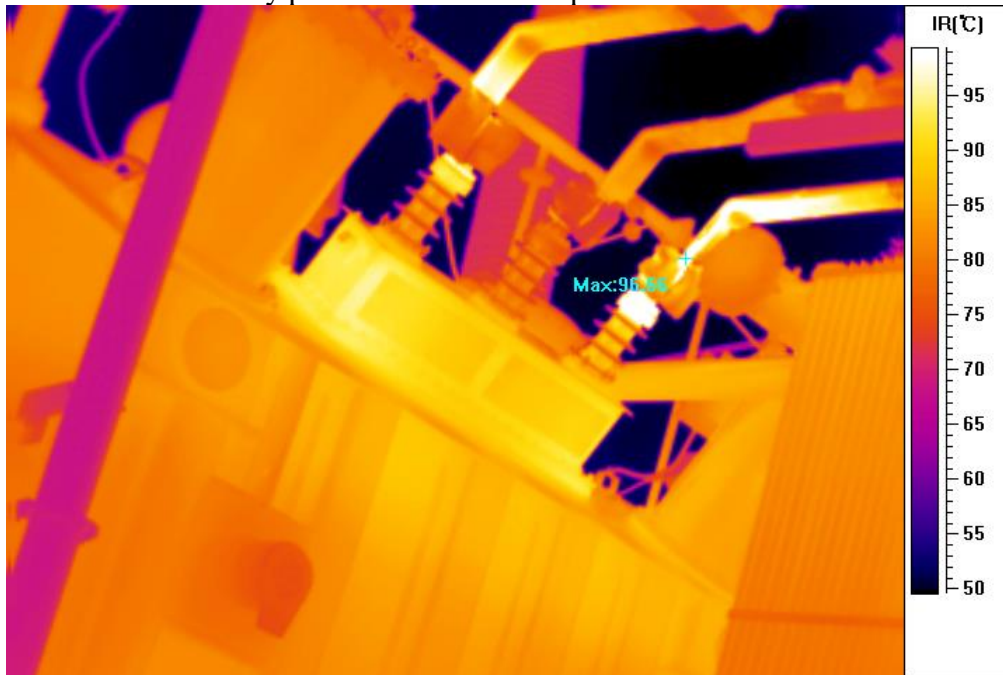
- 3.2.1 Click  to start playing IR video;
- 3.2.2 Click  to pause;
- 3.2.3 Click  to loop playback;
- 3.2.4 Click  to stop playing video;
- 3.2.5 Click  to accelerate video;
- 3.2.6 Click  to decelerate video;



### 3.3 Add analysis

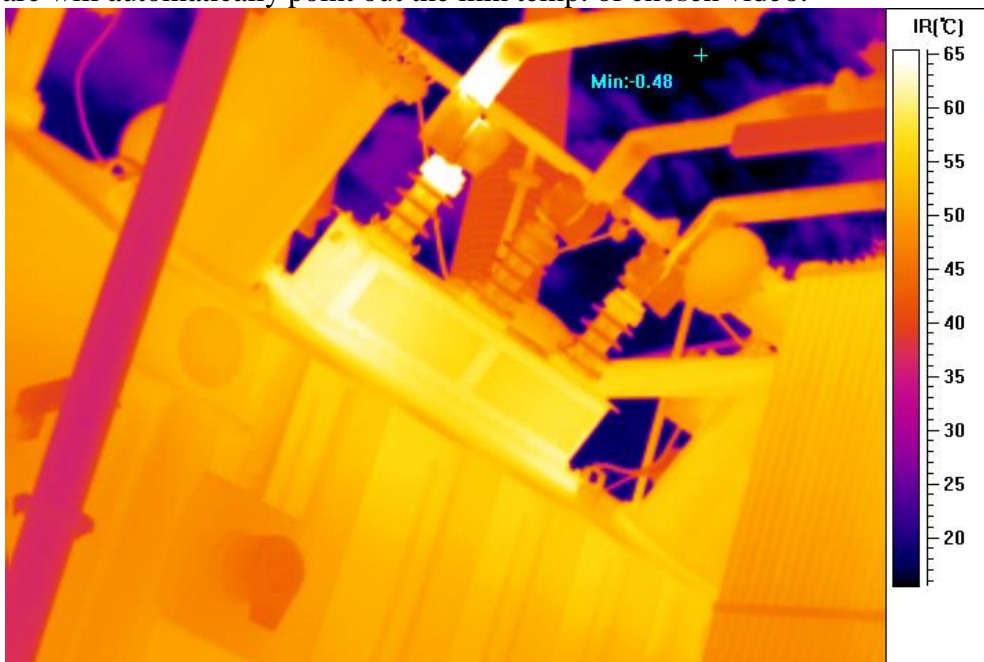
#### 3.3.1 Max temp.:

Software will automatically point out the max temp. of chosen video:




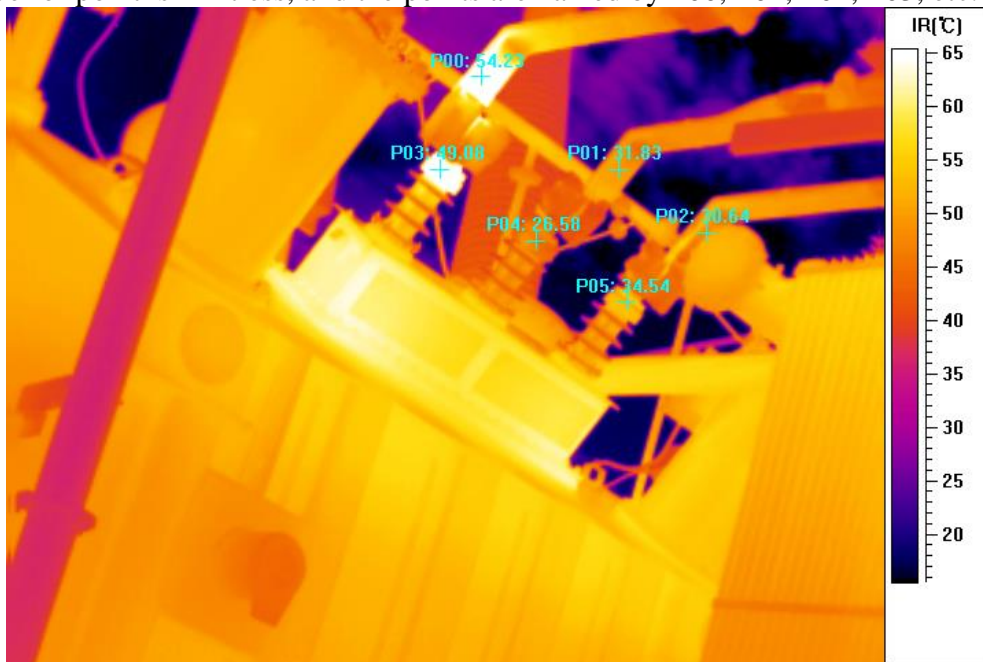
#### 3.3.2 Min temp.:

Software will automatically point out the min temp. of chosen video:




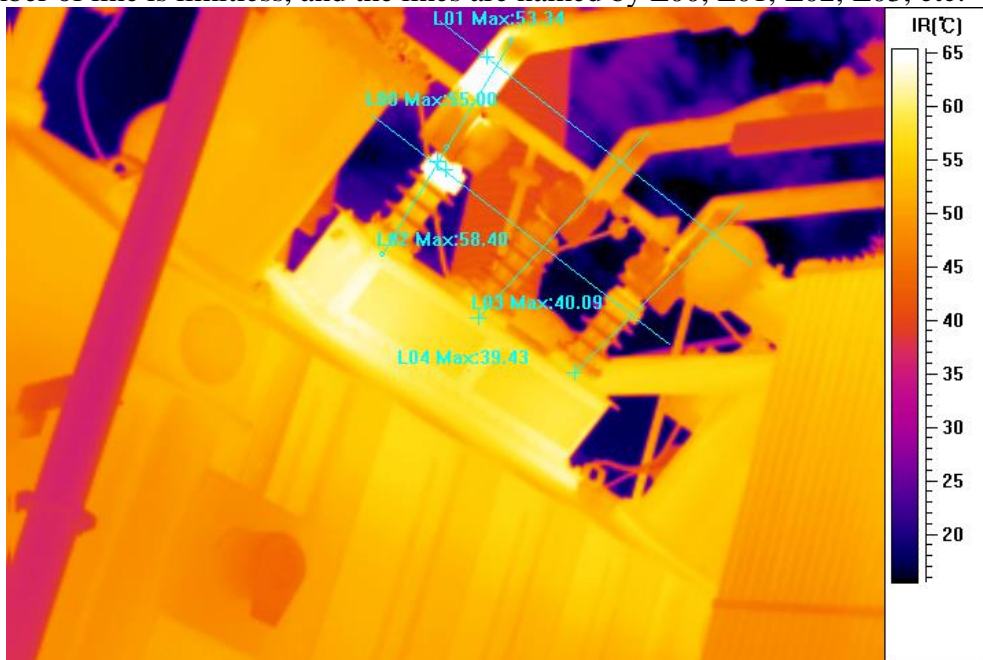
### 3.3.3 Add point

Click  and then click on target in the image, a new point analysis is added.  
The number of point is limitless, and the points are named by P00, P01, P02, P03, etc.




### 3.3.4 Add line

Click  then click on image to draw a line.  
User can move the line by holding the line to somewhere else. Line is changeable by pulling the ends of the line.  
The number of line is limitless, and the lines are named by L00, L01, L02, L03, etc.

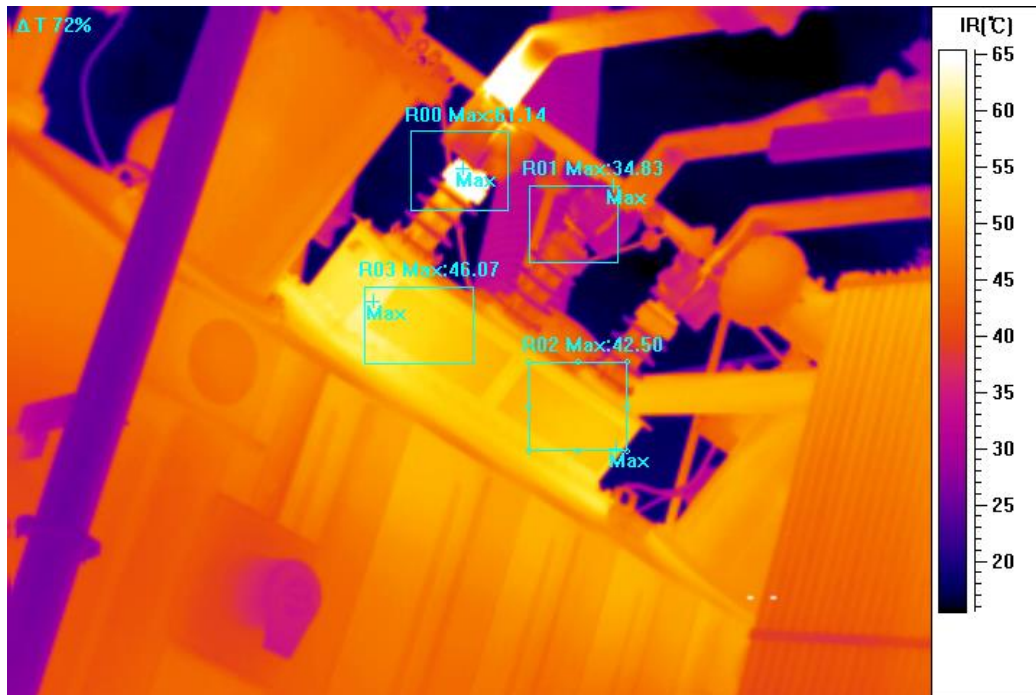


### 3.3.5 Add rectangle


Click  then click on image to draw a rectangle.

User can move the rectangle by holding the rectangle to somewhere else. Rectangle's size is changeable by pulling the borders of the rectangle.

The number of rectangle is limitless, and the rectangles are named by R00, R01, R02, R03, etc.

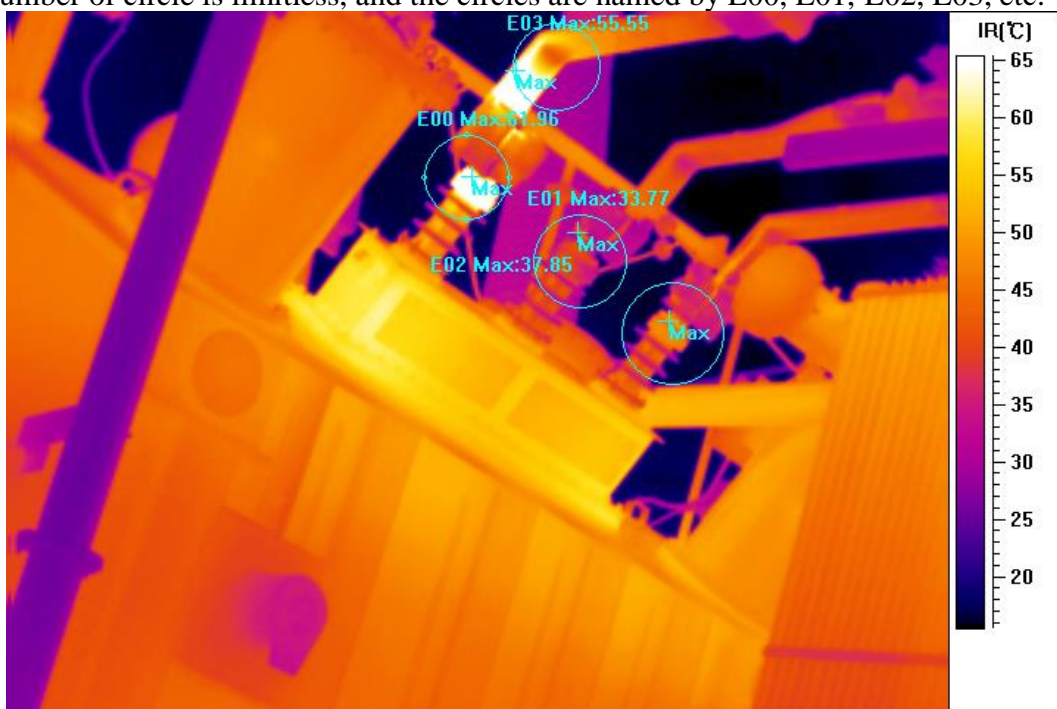


### 3.3.6 Add circle

Click  then click on image to draw a circle.


User can move the circle by holding the circle to somewhere else. Circle's size is changeable by pulling the border of the circle.

The number of circle is limitless, and the circles are named by E00, E01, E02, E03, etc.





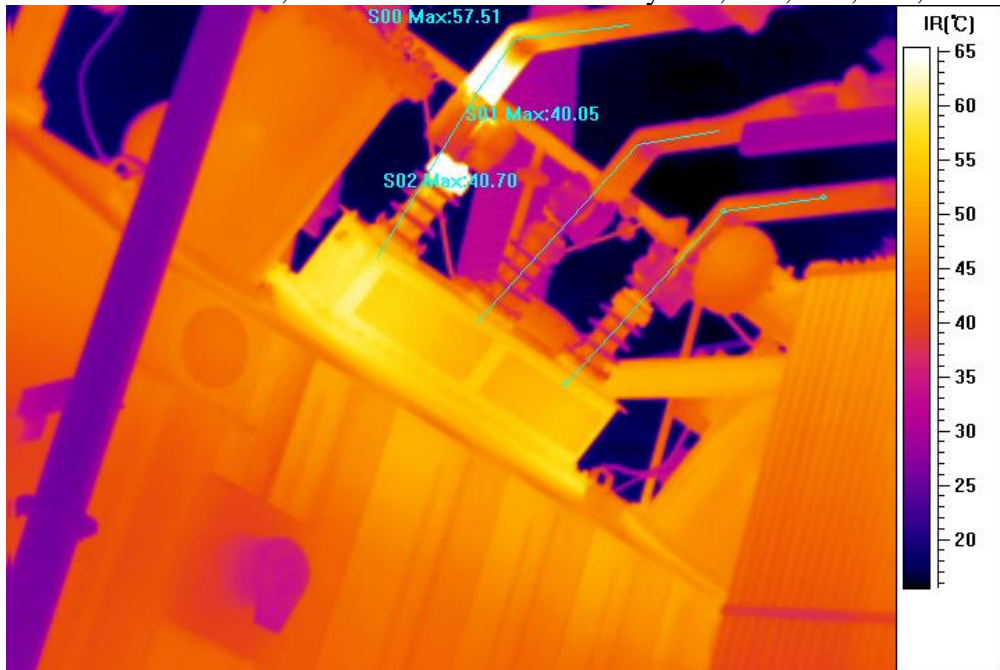
### 3.3.7 Add polyline

Click  then click the screen to add a polygon. Single-click is to fix the turning point, double-click to finish.


User can move the polyline by holding the polyline to somewhere else.

Polyline's size is changeable by pulling the turning point of the polyline.

The number of circle is limitless, and the circles are named by S00, S01, S02, S03, etc.



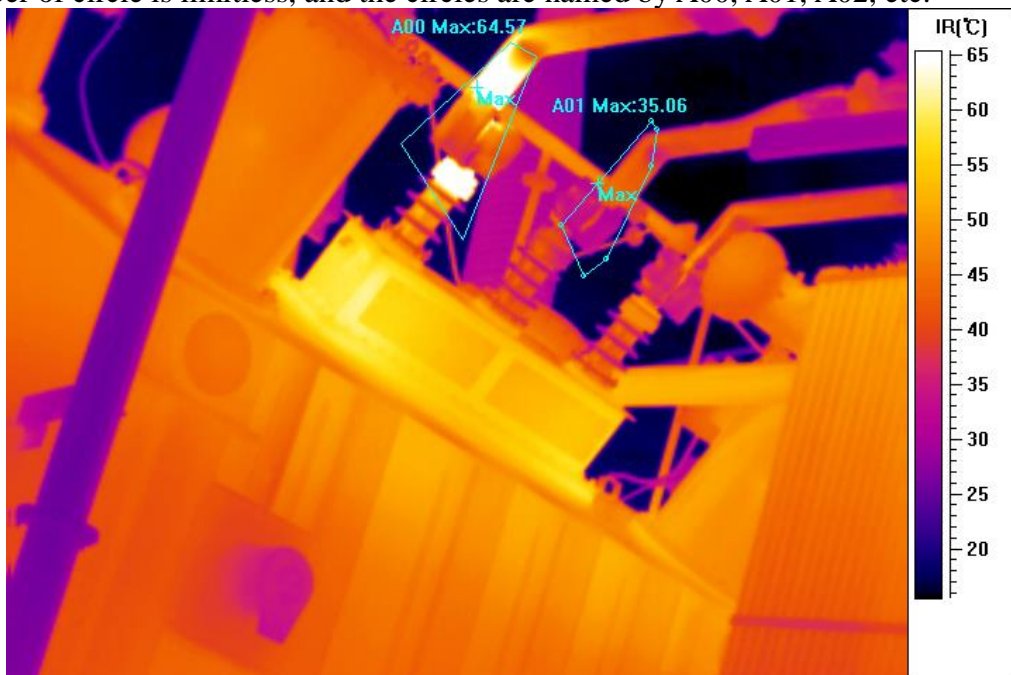
### 3.3.8 Add polygon

Click icon  then click the screen to add a polygon. Single-click is to fix the turning point, double-click to finish.

User can move the polygon by holding the polygon to somewhere else.

Polygon's size is changeable by pulling the turning point of the polygon.

The number of circle is limitless, and the circles are named by A00, A01, A02, etc.



### 3.4 Change analysis

Before move and resize a measurement tool, please move the mouse pointer to the measurement tool. (If the measurement is selected, there will be 8 panes surrounding it). Remove the mouse to layout and resize the measurement tool. There are different levels for measurement tools. The level sequence range from point, line, circular, box, polygon, polyline. Each meanings of them are as below.



Moving point.



Moving line without resizing.



Stretching line basing end-point.



Moving box without resizing.



Resizing box basing on arrow direction.



Moving circle without resizing.



Resizing circle basing on arrow direction.



Resizing polygon basing on surrounding block.



Place a point between two points of polygon.



Place a point between two points of polyline.










Remove polyline.

IR temperature data will be recalculated after moving and resizing the measurement tools.


## 3.5 Delete analysis

### 3.5.1 Delete single analysis


Click on  and mouse icon shows as , then click on the analysis that needs to be deleted. Repeat above to continue delete analysis.

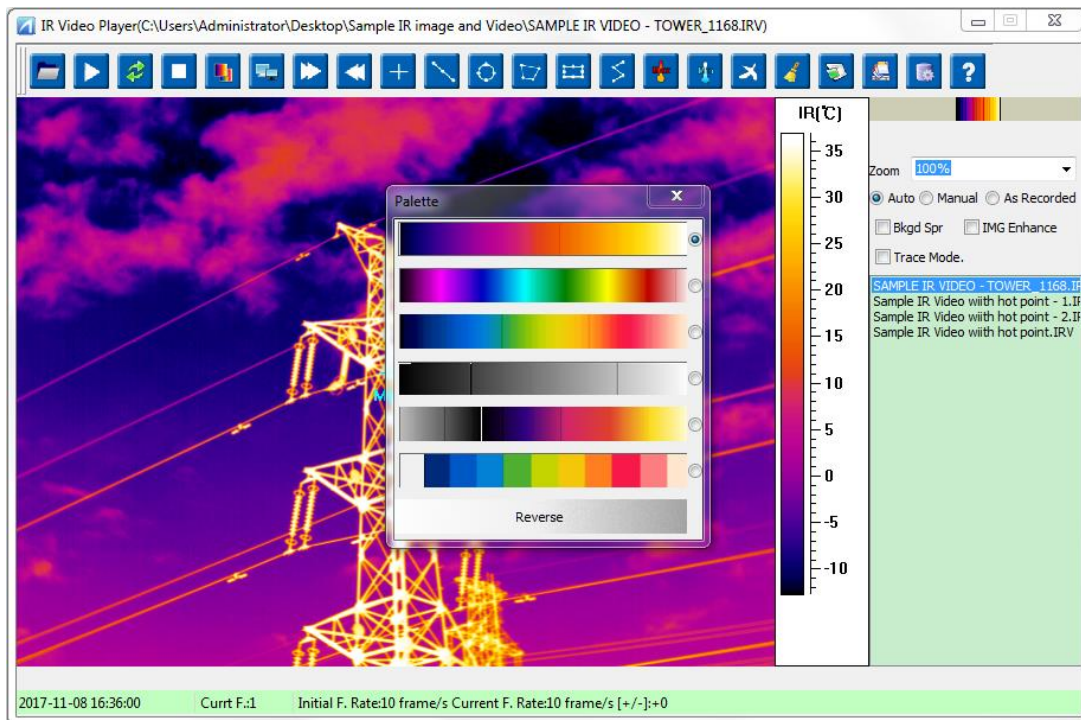
Different icon:  delete point,  delete line,  delete circle,  delete box,  delete polygon, and  delete polyline. Software will realign tag and change related data analysis automatically.

### 3.5.2 Delete all analysis

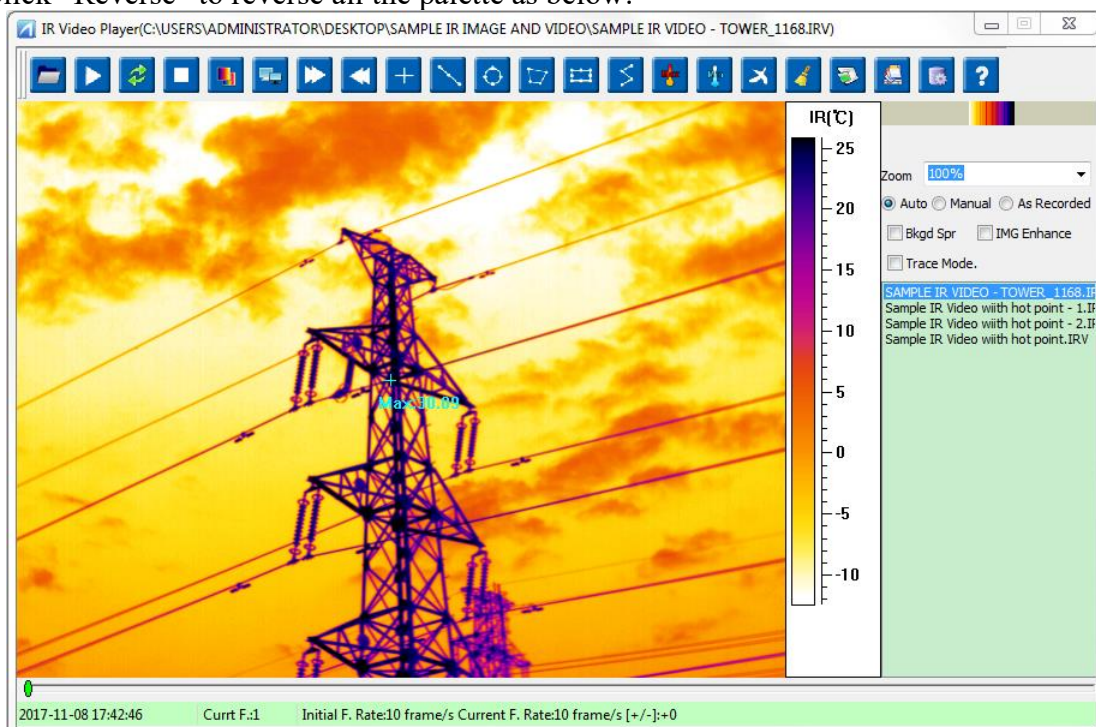
Click  to delete all analysis, software will realign tag and change related data analysis automatically. (point/ line/ box/ polygon/ polyline/ isotherm)

### 3.6 Set Palette

Infrared image distinguish temperature by palette, image can achieve best display effect by changing palette. Click icon  to adjust the palette, default palette of IR file is iron red as below:

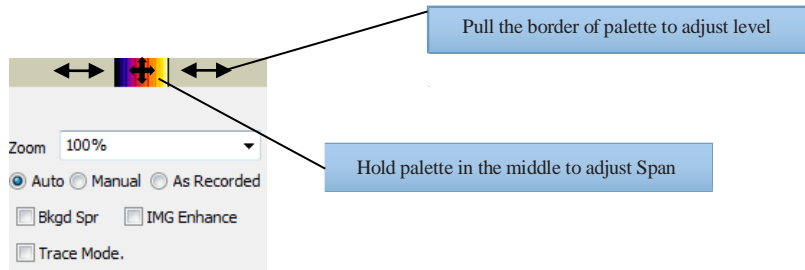


Click “Reverse” to reverse all the palette as below:

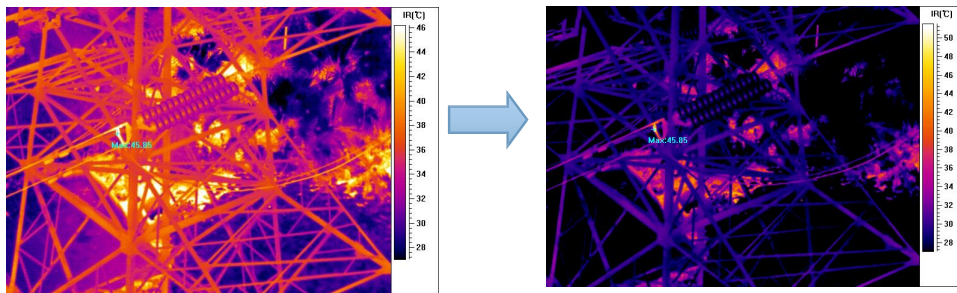


### 3.7 Adjust Level & Span and playing mode

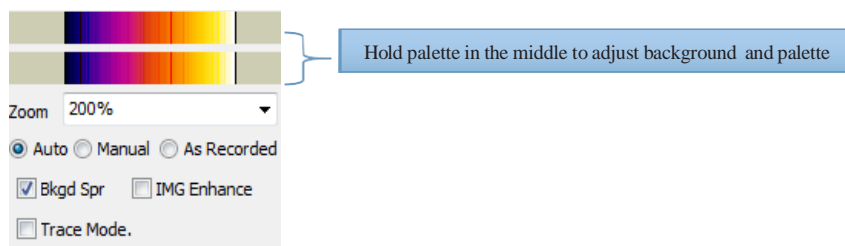
Click on Manual ☐ Auto ☒ Manual to adjust Level & Span manually. Otherwise, please choose Auto or As record.



After adjustment, please check the palette effects.

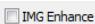


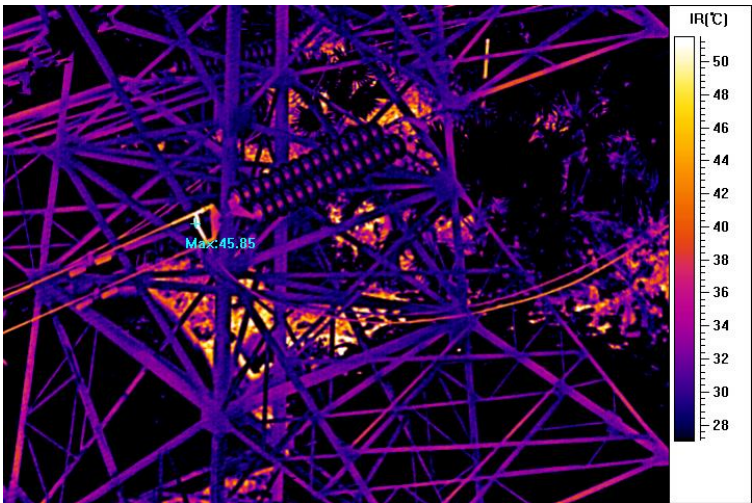
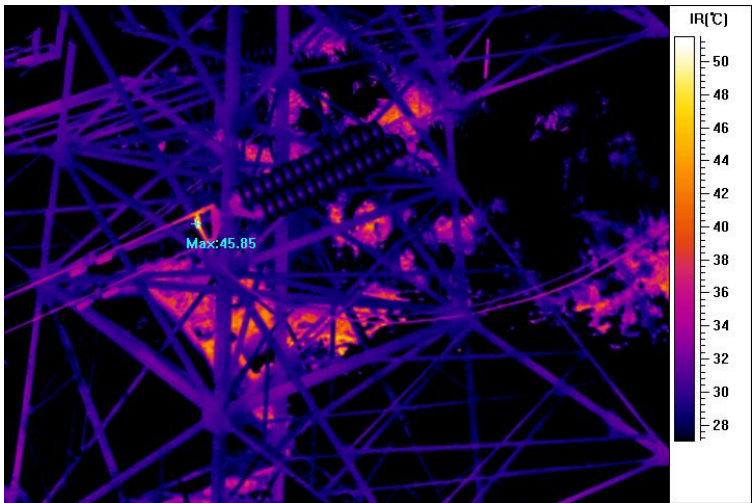
Click icon ☐ Bkgd Spr to separate the level & span between background and target.



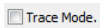


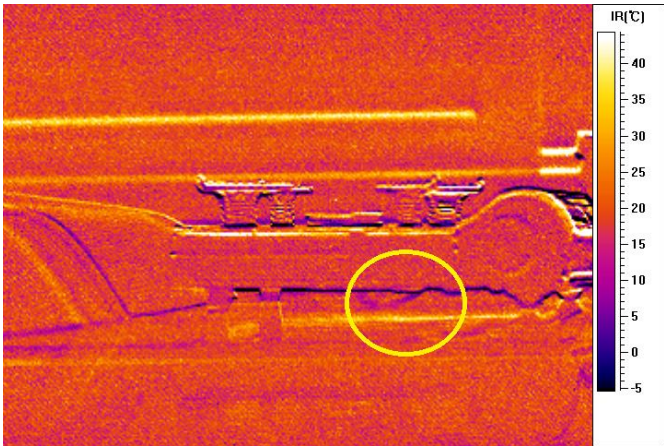
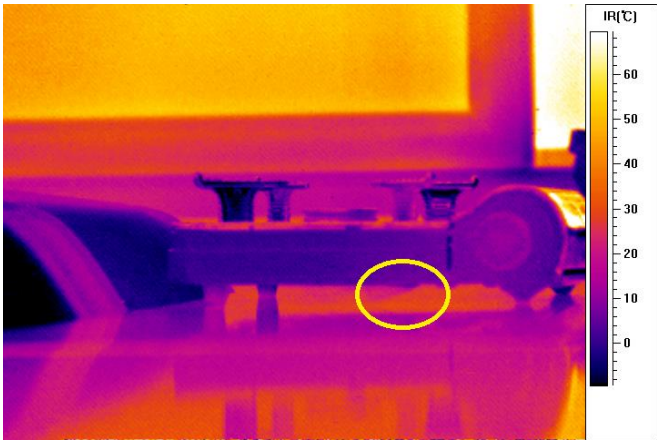
### 3.8 Image Enhance

Click icon  to make enhancement to image, after adjustment, please check the enhancement effects.




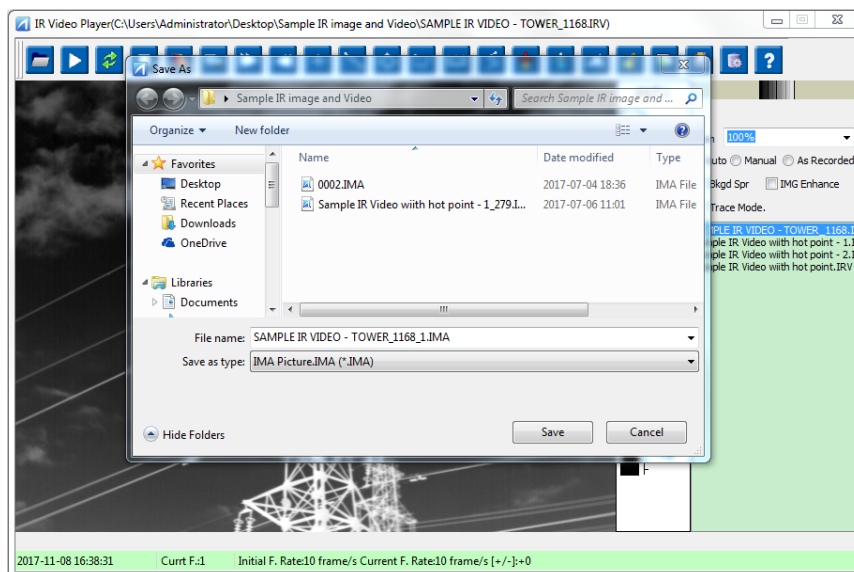
### 3.9 Trace Mode

Click icon  to change the playing mode from normal mode to Trace mode, please check the enhancement effects.  
(Only available for gas leak detection video)




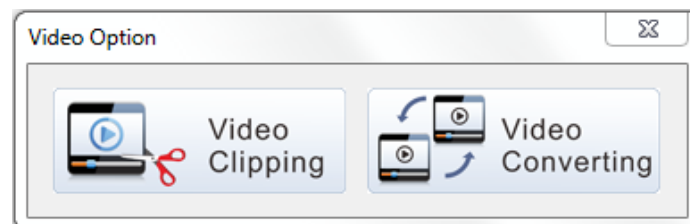
### 3.10 Image capture

Pause the IR video and click icon  to capture IR image. IR image can be saved as JPG or IMA (full radiometric temperature data) format as below:

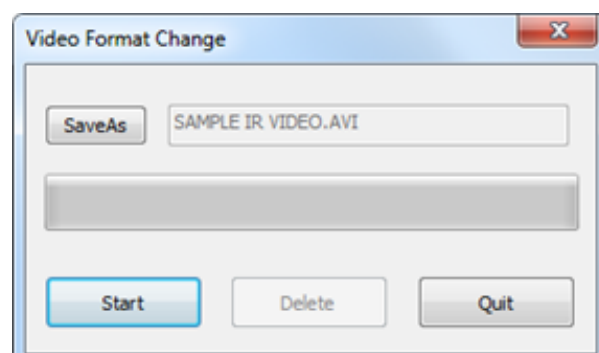
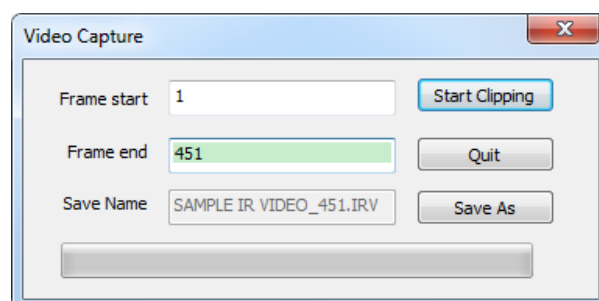


### 3.11 Video Editing

Click Video Editing , to operate “Video Clipping” or “Video converting” as below:




To clip a video or change the video format to AVI



3.12      **Generate report**



1. Click  to fulfill the details of report before report generation.

IR Report

Main Information

Working Voltage

Analysis Date

2017-11-08

Equipment Name

Analysis Time

16:40:14

Weather

Analyst

Amb Temp

25

Load Current

Emissivity

1.00

Inspector

Temperature data

Max. Temp

30.09

Min. Temp

-12.51

R00MAX

P00

R01MAX

P01

R02MAX

P02

L00MAX

P03

L01MAX

P04

L02MAX

P05

Other information

Remarks

Generate Report

Cancel

2. Click “Generate Report’ after fulfilling details and generate report as below:

IR Image Analysis Report

Working Voltage

Equipment

Weather

Amb Temp

25

Load Current

Emissivity

0.99

Inspector

Date

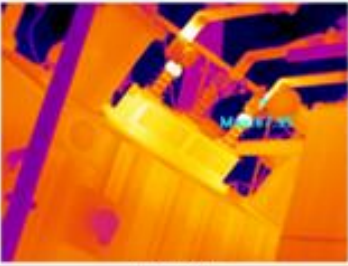
2017-06-07

Time

10:32:07

Analyst

IR Image




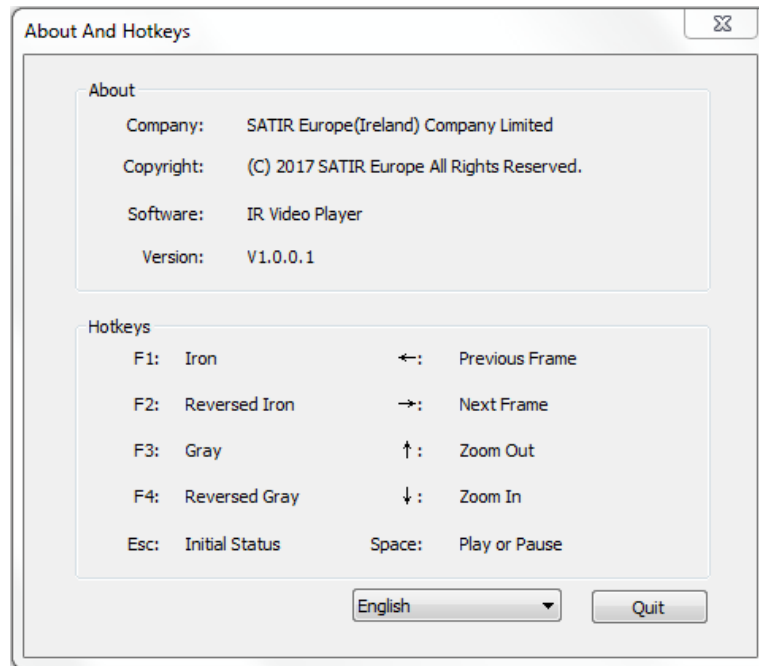
Analysis Table

Items	Value	Items	Value
MAX	67.93	MIN	-2.90
R00MAX		P00	
R01MAX		P01	
R02MAX		P02	
L00MAX		P03	
L01MAX		P04	
L02MAX		P05	

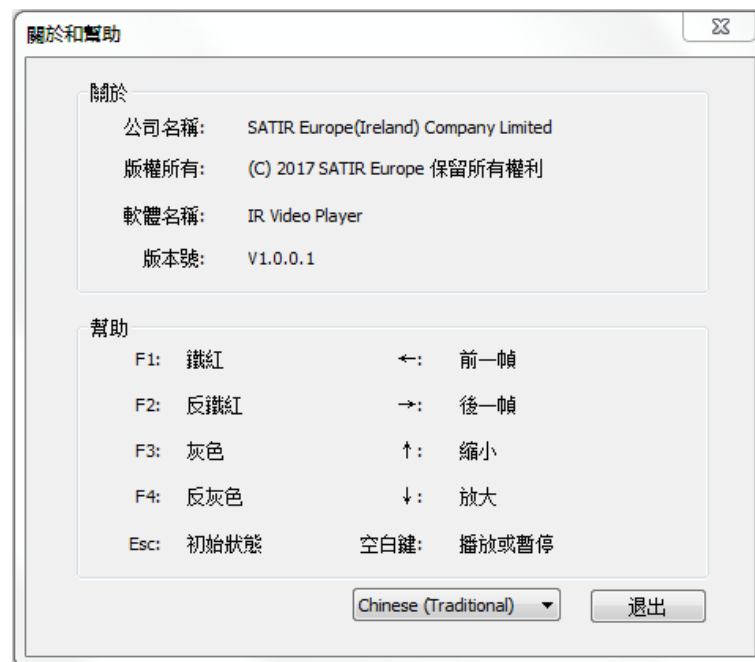
Remarks

### 3.13 About and help

1. Click  to check the info of shortcut key language switch.



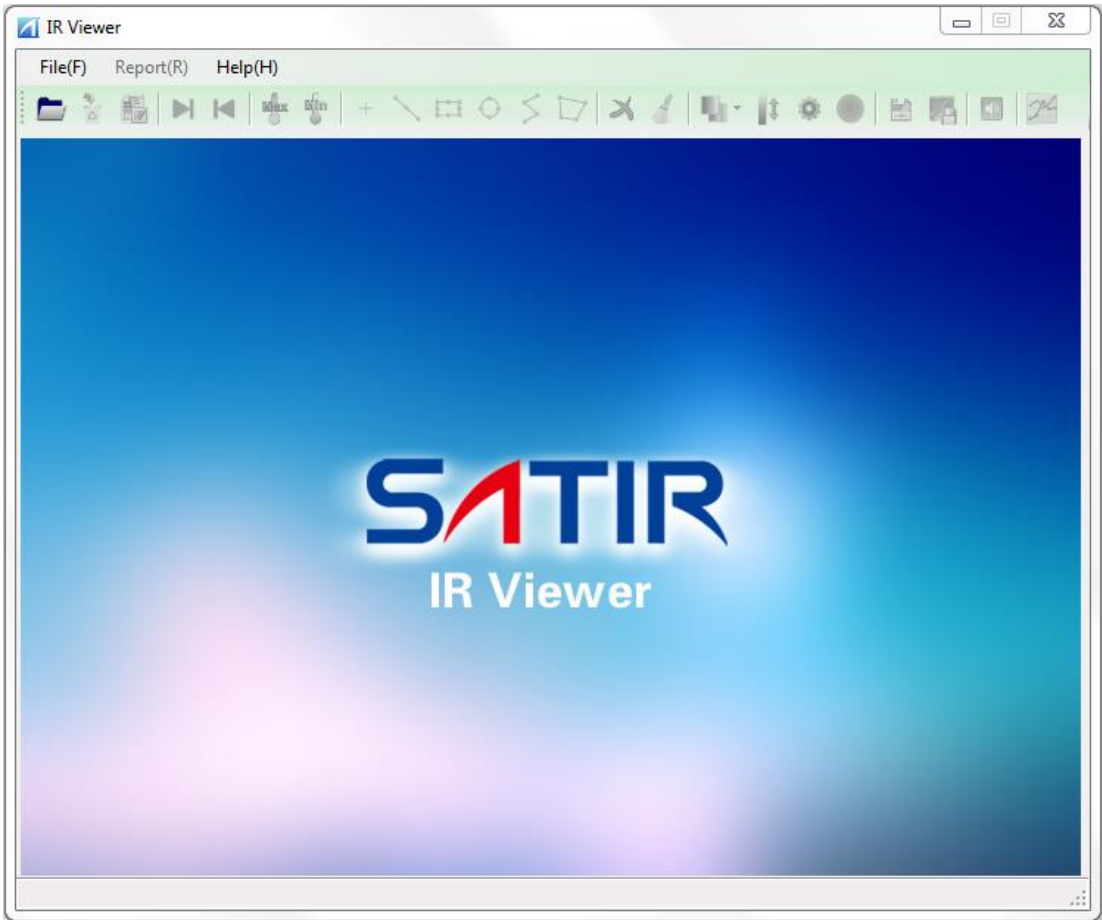
2. Click button  to set language of software as below:



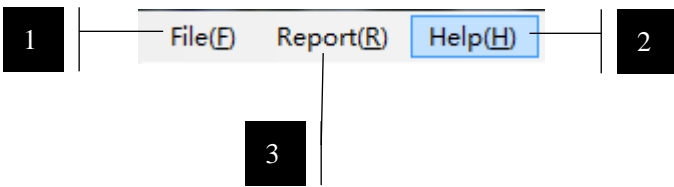
1. Click Exit  to exit "About and help".

# 4. IR Viewer Introduction

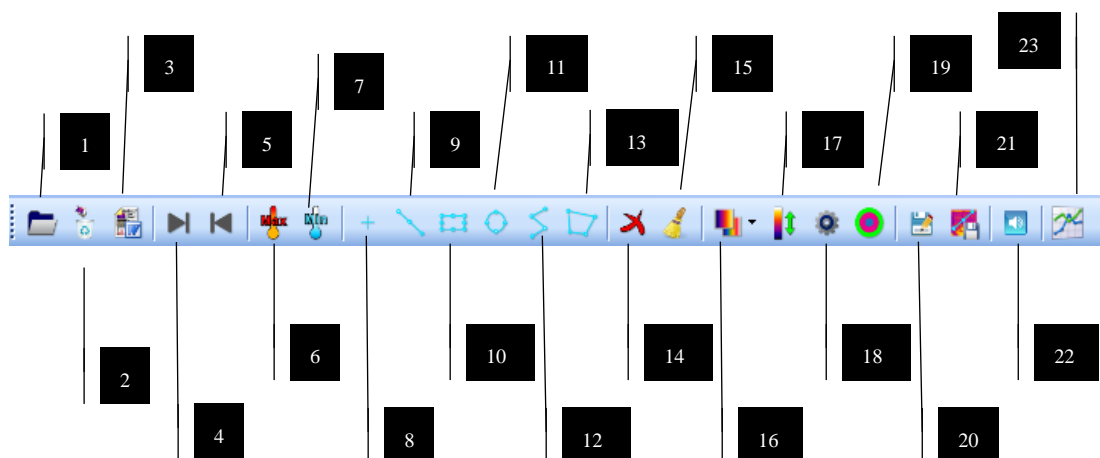
4.1 Double click on IR Video Player to open IR Video Player:



4.2 Menu



<b>1 File</b>	Open IR image
<b>2 Report</b>	Generate report
<b>3 Help</b>	Software info and language switch



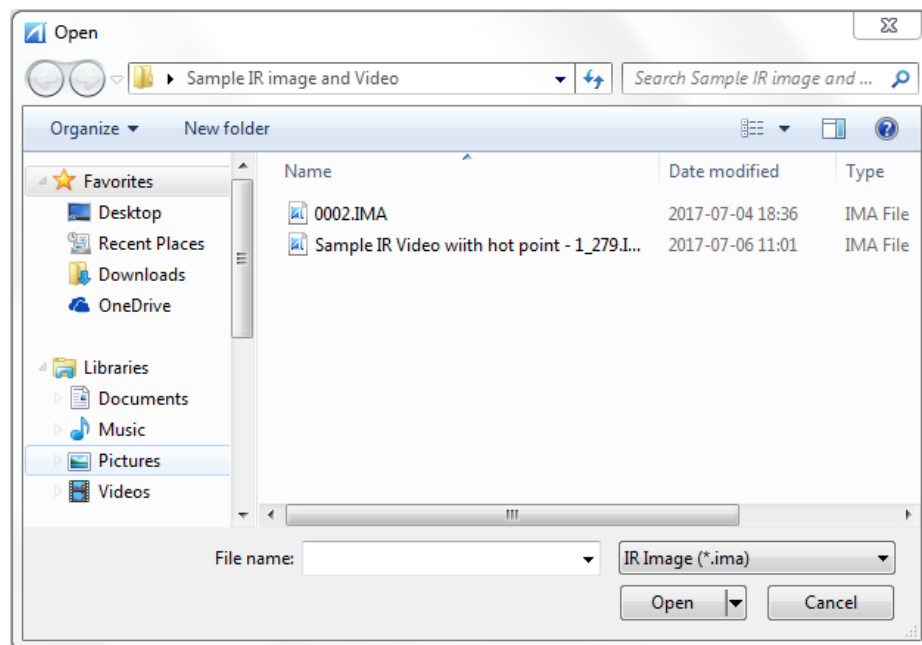
<b>1</b>	Open image	<b>13</b>	Add polygon
<b>2</b>	Delete image	<b>14</b>	Delete
<b>3</b>	Generate report	<b>15</b>	Delete all
<b>4</b>	Next	<b>16</b>	Palette
<b>5</b>	Previous	<b>17</b>	Level & Span
<b>6</b>	Max temp	<b>18</b>	Parameter setting
<b>7</b>	Min temp	<b>19</b>	Isotherm
<b>8</b>	Add point	<b>20</b>	Image save as
<b>9</b>	Add line	<b>21</b>	Image save with analysis
<b>10</b>	Add rectangle	<b>22</b>	Play sound
<b>11</b>	Add circle	<b>23</b>	Trending layout
<b>12</b>	Add polyline		



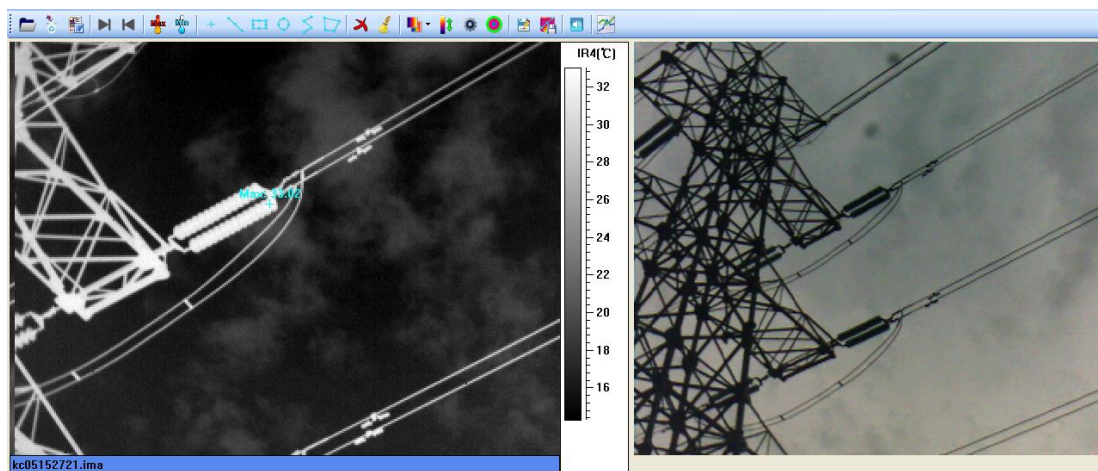
# 5. IR Viewer Operating Instruction

## 5.1 Open image

5.1.1 Click  to choose IR image, corresponding CCD image will be opened automatically;



5.1.2 Example:





## 5.2 Add Analysis

### 5.2.1 Max temp:

Software will automatically point out the max temp of chosen image;




### 5.2.2 Min temp:

Software will automatically point out the min temp of chosen image;




### 5.2.3 Add point:

Click  and then click on target in the image, a new point analysis is added. The number of point is limitless, and the points are named by P00, P01, P02, P03, etc.



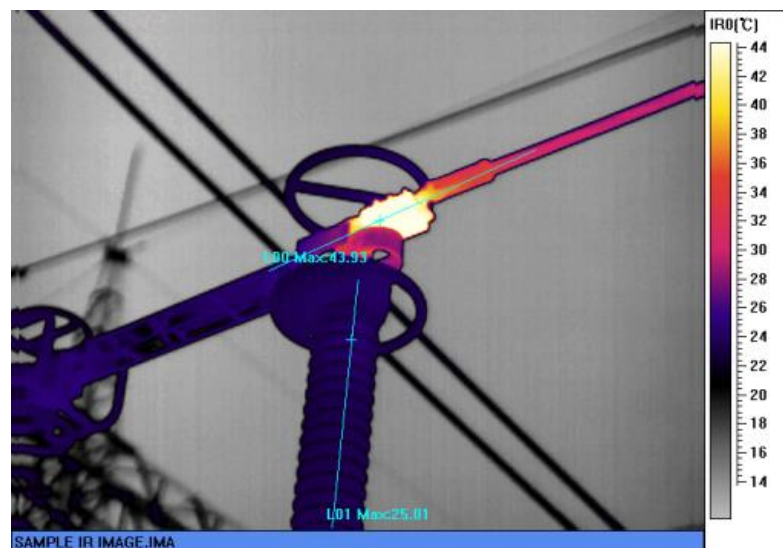
### 5.2.4 Add line:

Click  and then click on image to draw a line.


User can move the line by holding the line to somewhere else.

Line is changeable by pulling the ends of the line.

The number of line is limitless, and the lines are named by L00, L01, L02, L03, etc.



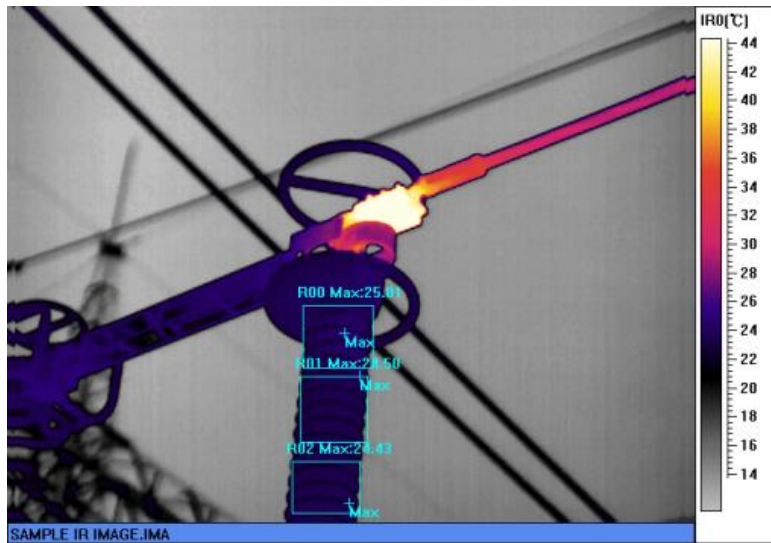
### 5.2.5 Add rectangle:

Click  and then click on image to draw a box.

User can move the box by holding the box to somewhere else.

Box's size is changeable by pulling border of the box.

The number of box is limitless, and the boxes are named by R00, R01, R02, R03, etc.



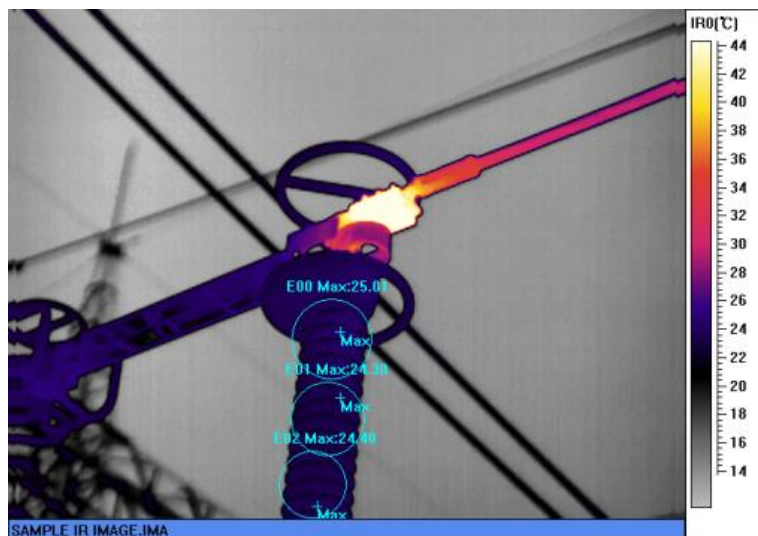
### 5.2.6 Add circle:

Click  and then click on image to draw a circle.


User can move the circle by holding the circle to somewhere else.

Circle's size is changeable by pulling border of the circle.

The number of circle is limitless, and the circles are named by E00, E01, E02, E03, etc.



### 5.2.7 Add polyline:

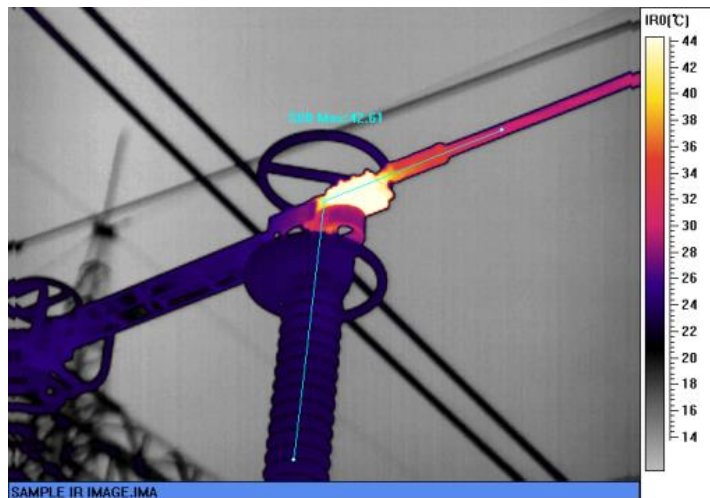
Click icon  then click the screen to add a polygon.

Single-click is to fix the turning point, double-click to finish.


User can move the polyline by holding the polyline to somewhere else.

Polyline's size is changeable by pulling the turning point of the polyline.

The number of circle is limitless, and the circles are named by S00, S01, S02, S03, etc.



### 5.2.8 Add polygon:

Click icon  then click the screen to add a polygon. Single-click is to fix the turning point, double-click to finish.

User can move the polygon by holding the polygon to somewhere else.

Polygon's size is changeable by pulling the turning point of the polygon.

The number of circle is limitless, and the circles are named by A00, A01, A02, etc.



### 5.3 Change analysis

Before move and resize a measurement tool, please move the mouse pointer to the measurement tool. (If the measurement is selected, there will be 8 panes surrounding it). Remove the mouse to layout and resize the measurement tool. There are different levels for measurement tools. The level sequence range from point, line, circular, box, polygon, polyline. Each meanings of them are as below.



Moving point.



Moving line without resizing.



Stretching line basing end-point.



Moving box without resizing.



Resizing box basing on arrow direction.



Moving circle without resizing.



Resizing circle basing on arrow direction.



Resizing polygon basing on surrounding block.



Place a point between two points of polygon.



Place a point between two points of polyline.











Remove polyline.

IR temperature data will be recalculated after moving and resizing the measurement tools.


## 5.4 Delete analysis

### (1) Delete single analysis

Click on  and mouse icon shows as , then click on the analysis that needs to be deleted.

Different icon:  delete point,  delete line,  delete circle,   
delete box,  delete polygon, and  delete polyline. Software will realign all tag and change related data analysis automatically.

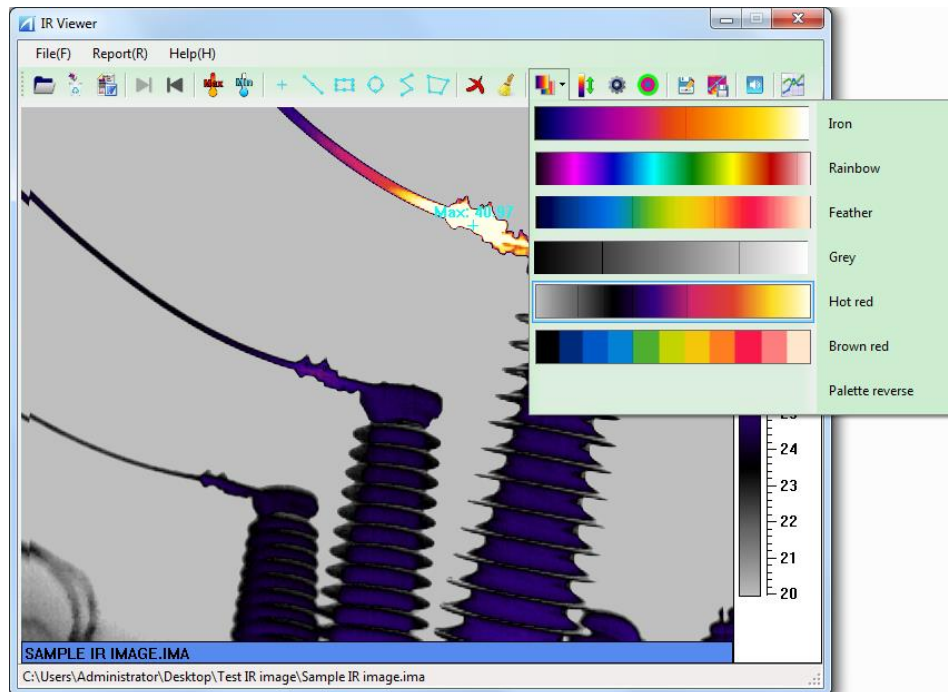
### (2) Delete all analysis

Click icon  to delete all the items, software will realign tag and change related data analysis automatically. (Point/ line/ rectangle / polygon/ polyline/ isotherm)

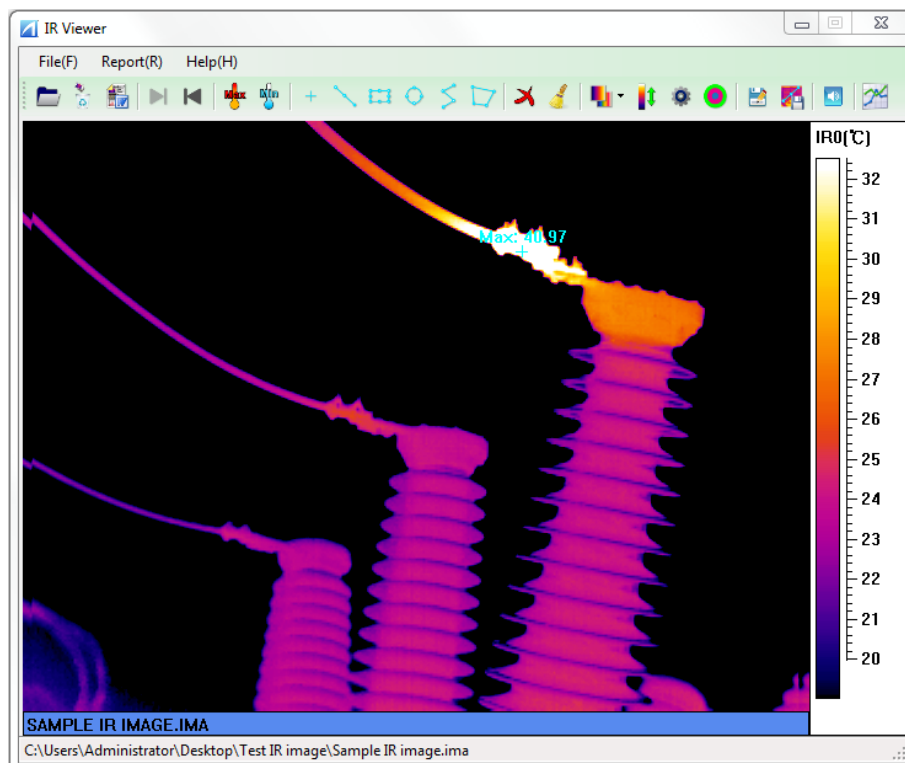


## 5.5 Set Palette


5.5.1 Click icon  to adjust the palette.

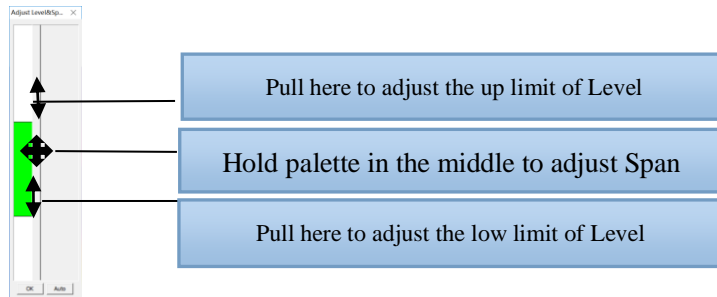


5.5.2 Click “Reverse” to reverse all the palette.

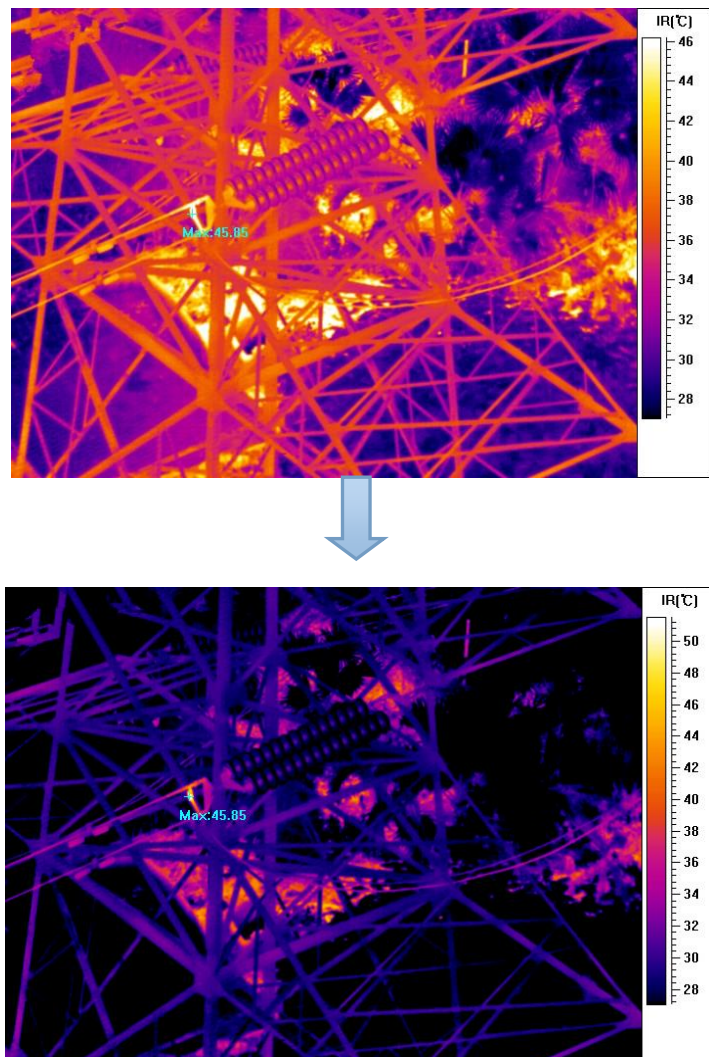


## 5.6 Adjust Level& Span

Click icon  to adjust Level& Span:



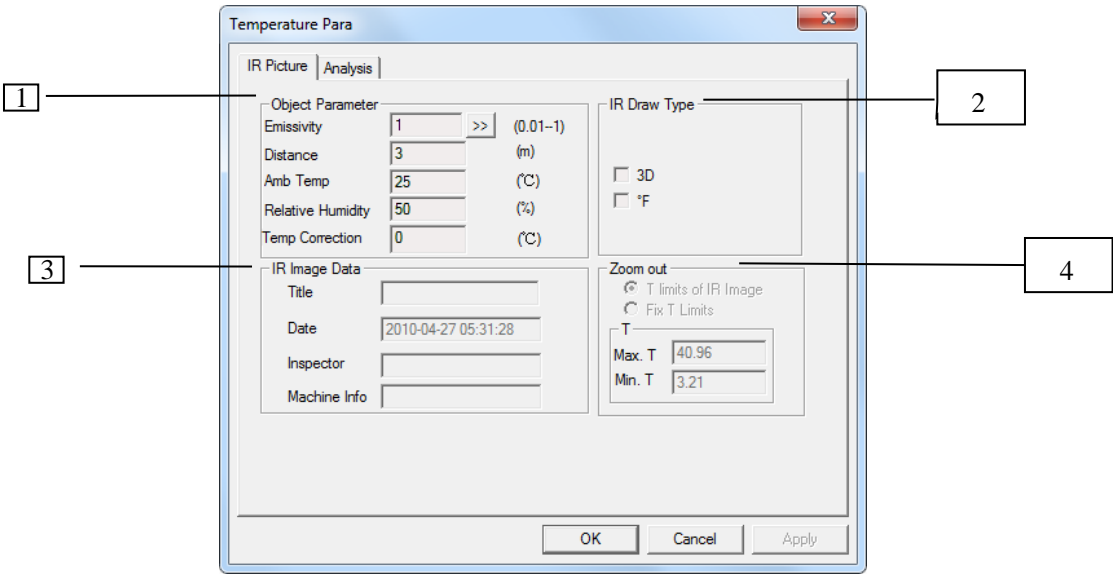
Example as below:






## 5.7 Parameter Setting

Click parameter setting icon  to adjust parameter, as below:



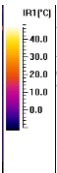
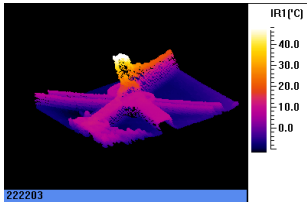
### 5.7.1 Image parameter setting

#### A. Object parameter

Emissivity, distance between the object and IR camera, ambient temperature and relative humidity can be set. Press  right beside **Emissivity** and the built-in emissivity table pops up as follows.

Number	Material	Type	Temperature	Emissivity	Default EMS
11001	Polished aluminum	Metal	100	0.09	0.09
11002	Commercial aluminum foil	Metal	100	0.09	0.09
11003	Electrolytic chromeplate al...	Metal		0.55	0.55
11004	Mild alumina	Metal	25~600	0.10~0.20	0.15
11005	Strong alumina	Metal	25~600	0.30~0.40	0.35
11006	Brass mirror (highly polished)	Metal	28	0.03	0.03
11007	Brass oxide	Metal	200~600	0.59~0.61	0.6
11008	Polished chrome	Metal	40~1090	0.08~0.36	0.22
11009	Copper mirror	Metal	100	0.05	0.05
11010	Strong copper oxide	Metal	25	0.078	0.078
11011	Cuprous oxide	Metal	800~1100	0.54~0.66	0.60
11012	Liquid copper	Metal	1080~1280	0.13~0.16	0.14
11013	Gold mirror	Metal	230~630	0.02	0.02
11014	Polished cast iron	Metal	200	0.21	0.21
11015	Processed cast iron	Metal	20	0.44	0.44
11016	Polished tempered iron	Metal	40~250	0.28	0.28
11017	polished steel ingot	Metal	770~1040	0.52~0.56	0.54
11018	Raw welded steel	Metal	945~1100	0.52~0.61	0.56
11019	Completely rusty surface	Metal	20	0.69	0.69
11020	Rolled iron plate	Metal	22	0.66	0.66

B. Set IR image display

<b>Show analysis label</b>	 <p>Whether to display the palette as shown on the left side</p>
<b>3D</b>	 <p>Whether to display 3D image as follows</p>


C. Set IR data

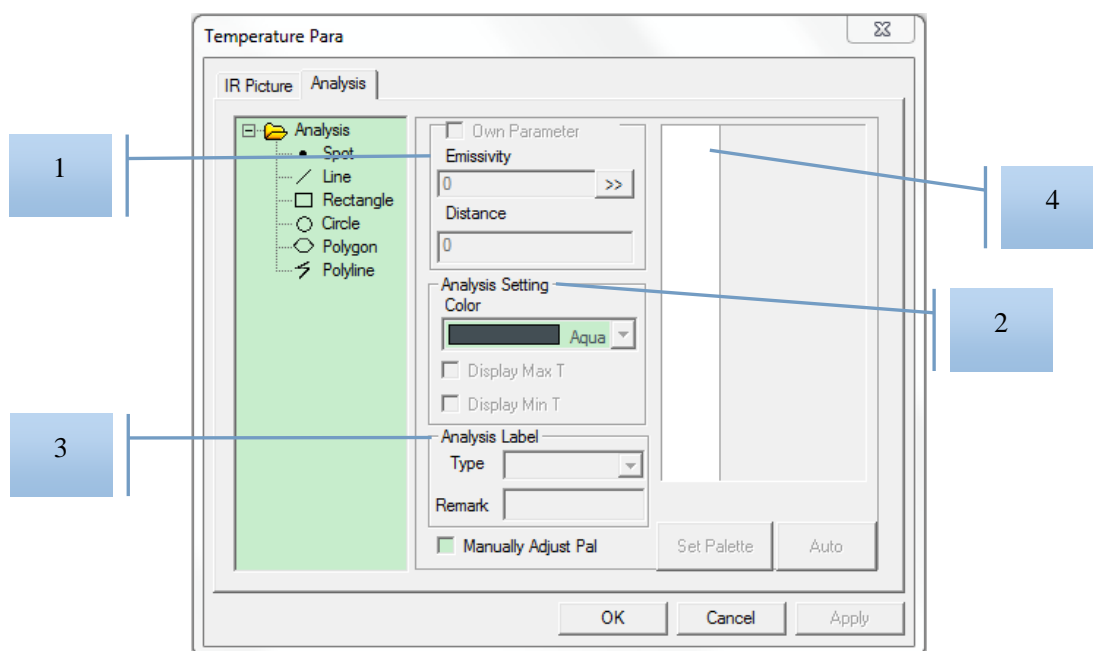
<b>Title</b>	Indicate title of the IR image
<b>Date</b>	Indicate date of the IR image
<b>Operator</b>	Indicate operator of the IR image

D. Zoom

<b>Temperature limits of IR image</b>	Display level & span of IR image automatically
<b>Fix temperature limits</b>	Set a fix value to level & span of IR image

## 5.7.2 Set analysis tools

Click parameter setting icon  and and Select **Analysis** as below:



Before setting, an analysis tools should be selected in advance.

- A. Customized parameter (Independent parameter can be set when this option is selected.)

Emissivity	Set emissivity of the object
Distance	Set distance between the object and IR camera

Notice: emissivity value can be inputted manually, or selected from emissivity table.  
Please check 4.7 to find out emissivity table.

- B. Analysis setting

Color	Set color of the analysis tool
Display Max T	Display maximum temperature (only for circles, boxes and polygons)
Display Min T	Display minimum temperature (only for circles, boxes and polygons)


### C. Analysis label

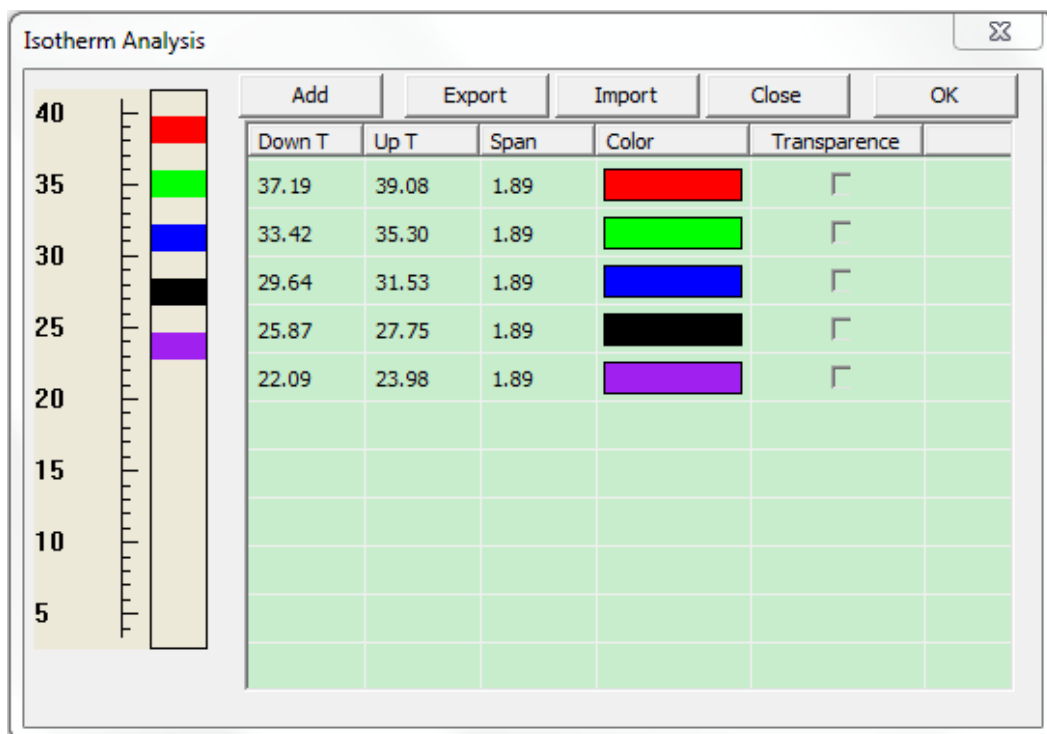
Type	<p>Indicate analysis tool, displays corresponding temperature data</p> <ul style="list-style-type: none"> <li>● For spots, Blank/Temperature is available.</li> <li>● For lines, boxes, circles, polygons and polylines, Blank/Max T/Min T/Ave T is available.</li> </ul>
Remark	Users can add any notes.

### D. Set level & span and palette (only for boxes, circles and polygons)

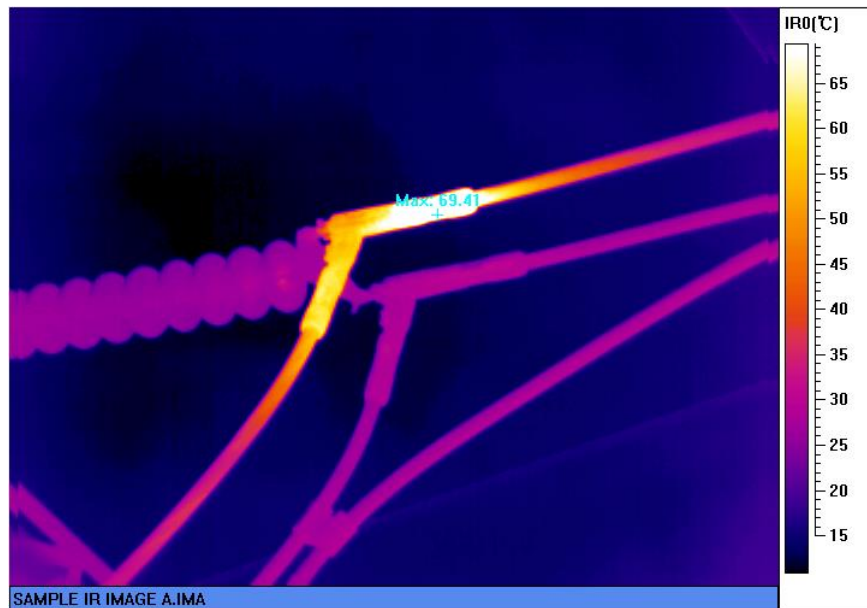
Level & Span	Set level & span for the area manually
Set Palette	Set palette for the area

## 5.8 Isotherm analysis

Click icon  to set Isotherm as below



- Click Add to add color analysis to IR image, ten colors are available for isotherm analysis.
- To delete any color, right click the color and select Delete. To delete all colors, right click and select Delete All.
- After select the color for isotherm analysis, click **OK** to save the setting and click Close to exit. In order not to save the setting, click **Close** directly to exit without saving.



Original Image

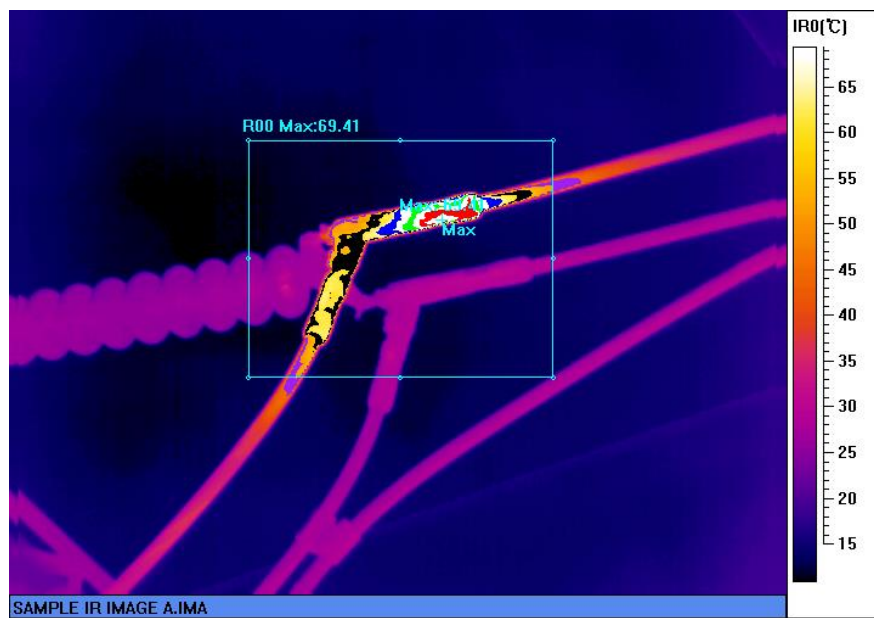

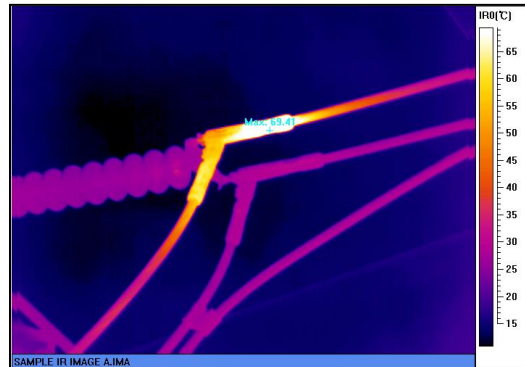
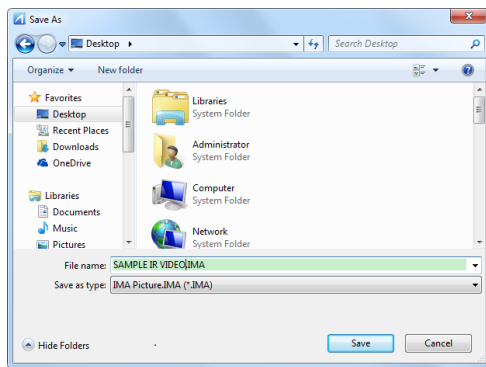



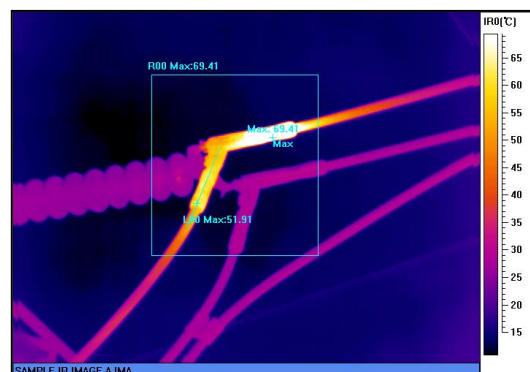
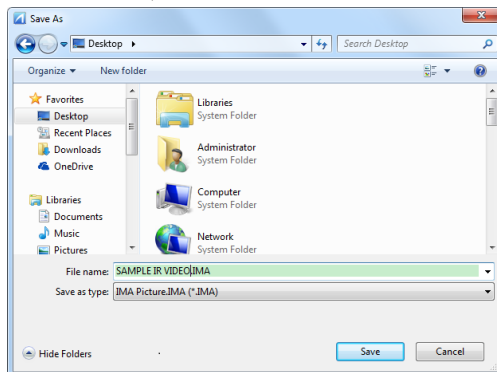
Image with Isotherm analysis


## 5.9 Save image, play sound and trending

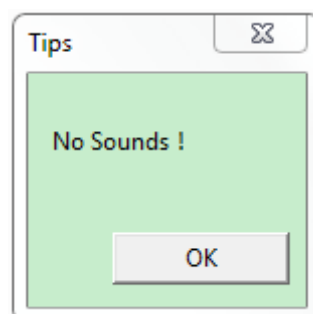
5.9.1 Click icon  to save IR image as BMP or JPEG format (without analysis tools);




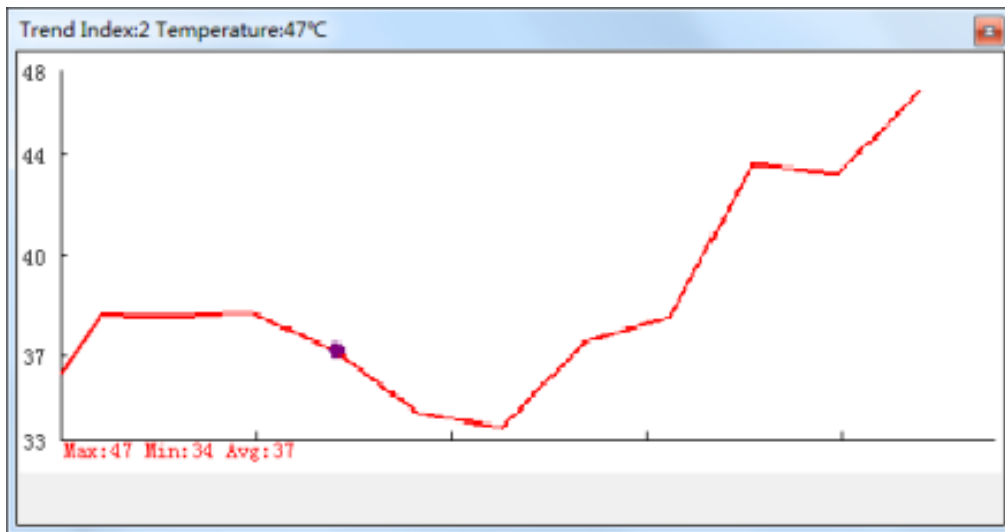
5.9.2 Click icon  to save IR image with added analysis as BMP or JPEG format;




5.9.3 Click icon  to play sound; if image doesn't contain sound, tip will show up as below:



5.9.4 Click icon  to generate max temp trending of all image within folder.



## 5.10 Generate report

5.10.1 Click icon  to fulfill the details of report before report generation.

**ReportData**

Main Information		Temperature data	
Working Voltage	<input type="text"/>	Snap Date	2015-08-18
Equipment Name	<input type="text"/>	Snap Time	16:06:42
Weather	<input type="text"/>	Analyst	<input type="text"/>
Amb Temp	25.00°C	Max. Temp	46.97
Load Current	<input type="text"/>	Min. Temp	32.46°C
Emissivity	1.00	R00MAX	46.97°C
Inspector	<input type="text"/>	P00	-
		R01MAX	-
		P01	-
		R02MAX	-
		P02	-
		L00MAX	-
		P03	-
		L01MAX	-
		P04	-
		L02MAX	-
		P05	-

**Other Information**

Title



Remarks

Suggestion

Feedback



5.10.2 Click “Generate report” after fulfilling details and generate report as below:

Working Voltage: <input type="text"/>				Equipment: <input type="text"/>		Weather: <input type="text"/>		Amb.Temp: 25.00°C																																	
Leading Current: <input type="text"/>				Emissivity: 1.00		Inspector: <input type="text"/>		<input type="text"/>																																	
Date: 2011-05-14				Time: 17:05:38		Analyst: <input type="text"/>		<input type="text"/>																																	
<div><div>IR Image</div></div> <div><div>CCD Image</div></div>																																									
Analysis Table																																									
<table border="1"><thead><tr><th>Items</th><th>Value</th><th>Items</th><th>Value</th></tr></thead><tbody><tr><td>Max Temp:</td><td>30.21</td><td>Min Temp:</td><td>18.71°C</td></tr><tr><td>ROI1MAX:</td><td>--</td><td>P00:</td><td>--</td></tr><tr><td>ROI1MAX:</td><td>--</td><td>P01:</td><td>--</td></tr><tr><td>ROI2MAX:</td><td>--</td><td>P02:</td><td>--</td></tr><tr><td>ROI3MAX:</td><td>--</td><td>P03:</td><td>--</td></tr><tr><td>ROI4MAX:</td><td>--</td><td>P04:</td><td>--</td></tr><tr><td>ROI5MAX:</td><td>--</td><td>P05:</td><td>--</td></tr></tbody></table>										Items	Value	Items	Value	Max Temp:	30.21	Min Temp:	18.71°C	ROI1MAX:	--	P00:	--	ROI1MAX:	--	P01:	--	ROI2MAX:	--	P02:	--	ROI3MAX:	--	P03:	--	ROI4MAX:	--	P04:	--	ROI5MAX:	--	P05:	--
Items	Value	Items	Value																																						
Max Temp:	30.21	Min Temp:	18.71°C																																						
ROI1MAX:	--	P00:	--																																						
ROI1MAX:	--	P01:	--																																						
ROI2MAX:	--	P02:	--																																						
ROI3MAX:	--	P03:	--																																						
ROI4MAX:	--	P04:	--																																						
ROI5MAX:	--	P05:	--																																						
Remarks: <input type="text"/>																																									
Suggestion: <input type="text"/>																																									
Feedback: <input type="text"/>																																									

## 6. Declaration

Welcome to use SATIR IR Tools, we appreciate your support and trust!

1. SATIR is not responsible for breakdown of Microsoft Office Word caused by the misoperation.
2. SATIR reserves the right to make changes or updates with the respect to or in the content of software and manual at any time without notice.

IR Tools copyright by SATIR Europe (Ireland) Company Limited. All rights reserved.